



Chooty & Co.

*Simply Stunning  
American Made Products*

2012 THROW BROCHURE



### **Introducing Chooty & Co. Throws**

Made in the USA, Chooty & Co throws are luxurious and functional. With the possibility of creating your own throw, your throws can be colorful, sophisticated, understated—whatever fits your style. Refer to our Swatch and Product Brochure online for a full listing of available fabrics.

866.729.1135

*All products made in Council Bluffs, IA*

[www.chooty.com](http://www.chooty.com)

## Lined Throws

Two layers of fabric seamed together. Great medium-weight throw. Three edging options available.

### 1. Topstitched, Finished Edge



**Waterlilies** *chocolate* ct50136-0056



**Agate** *marigold* ct50208-0005



**Agate** *claret* ct50005-0005



**Agate** *pebble* ct50209-0005



**Agate** *storm* ct50207-0005



**Uzbek** *taupe* ct50118-0093



**Uzbek** *chocolate* ct50120-0093



**Italic** *off-white* ct50439-0043



**Italic** *brown* ct50438-0043



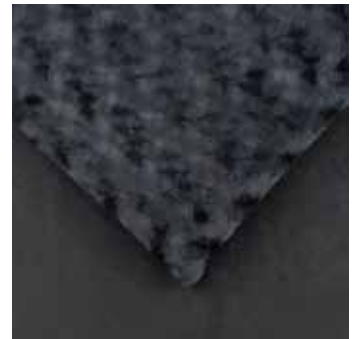
**Rosebud** *sage* ct502055-0005



**Cloud Nine** *coffee* ct50025-0093



**Vortex** *chocolate* ct50246-0005



**Vortex** *black* ct50254-0005



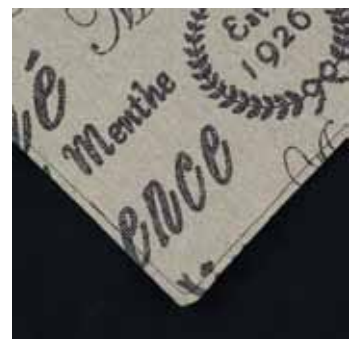
**Shaggy** *sand* ct502057-0005



**Shaggy** *chocolate* ct502056-0005



**Shaggy** *black* ct50589-0005



**Tea House** *black* ct50336-0005



**Giraffe bitter** ct502027-0093



**Bobcat camel** ct502028-0093



**Zebra black** ct502029-0093



**Maybella bitter** ct50500-0005



**Edwyna port** ct50528-0056



**Adagio pewter** ct502011-0093



**Adagio turquoise** ct502015-0093



**Adagio moss** ct502012-0093



**Edwyna bay** ct50527963-0056



**Valente willow** ct50069-0043

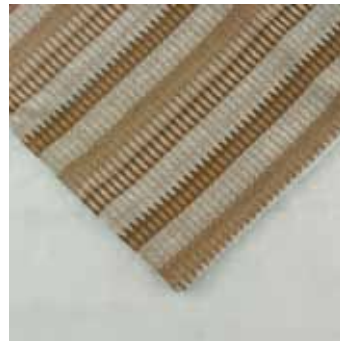


**Loop bluestone** ct50383-0093

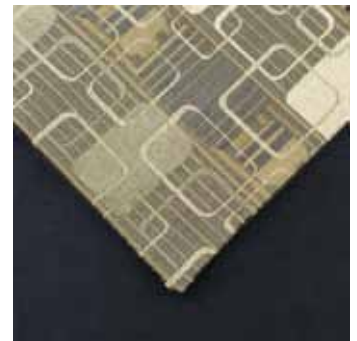


**Ghery almond** ct5010-0093

Can't seem to find what you are looking for?  
**Create your own throw** using the Swatch and  
Product Brochure under "Catalogs" at  
[www.chooty.com](http://www.chooty.com).



**Azula storm** ct50270-0005



**Ghery onyx** ct50017-0093



**Amari kiwi** ct50300-0005



**Amari ebony** ct50377-0005



**Amari plum** ct50302-0005



**Cisco teak** ct50422803-0005



Shaman *seal* ct50514-0093



Shaman *loden* ct50518-0093



Shaman *cocoa* ct50517-0093



Shaman *latte* ct50516-0093



Jagger *pebble* ct50016-0043



Jagger *tortoise* ct50013-0043



Jagger *safari* ct50015-0043



Jagger *rum raisin* ct50014-0043



Half Pint *brown* ct50503-0054



Taline *fur*  
ct50237-0099



Review *wichita* ct50410-0067



Cloud Nine *coffee* ct50025290-0093





## Lined Throws Continued

### 2. Mitered Edge

solid backing fabric, mitered band on front

### 3. Flanged Edge

solid backing fabric creates flanged edge

## Plush Throws

Two layers of fabric with the addition of batting in between the layers. Great medium to heavy weight throw—perfect for snuggling on cold winter nights.

### 1. Topstitched, Finished Edge

solid backing fabric, topstitched edge finish

### 2. Mitered Edge

solid backing fabric, mitered band on front

### 3. Flanged Edge

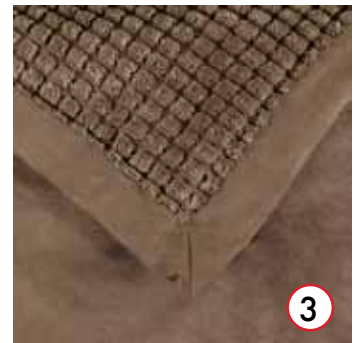
solid backing fabric creates flanged edge



Passion Suede *celery* ct26896-0071



Rosebud *chocolate* ct72m2093-0056



Cloud Nine *coffee* ct57mf025-0096



Jagger *rum raisin* ct50h014-0092



Azula *storm* ct50h270-0004



Ghery *onyx* ct50h017-0013

## Hemmed Throws

One layer of fabric with finished edges.

Excellent for warm climates or customers searching for a lower price point. Talk to your sales representative to discuss which fabrics create the best hemmed throws.

### 1. Topstitched, Finished Edge

single layer with rolled and topstitched edges



Agate marigold ct72m208-0005

## Hemmed Throws Continued

### 2. Mitered Edge

single layer with mitered band on front



Agate pebble ct72m209-0005



Go Figure blood trail ct72m409-00001



Vanora hunter ct50hm511123-0044



Agate storm ct72m207-0005



## Pieced Throws

Lined throws created by piecing together two or more coordinating fabrics. Don't see a combination you like? Contact your sales representative to create a custom design.



Cloud Nine r.pepper ct50p027-0054



Jagger safari ct50p015-0004



Agate claret ct50p005389-0005



Zebra spots ct50pm990046-0005

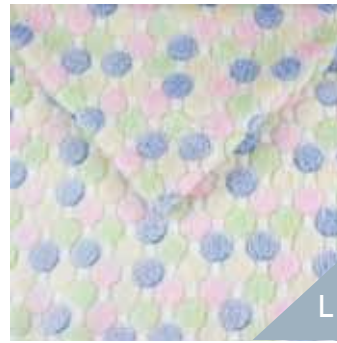


Azula storm ct57mf270-0037

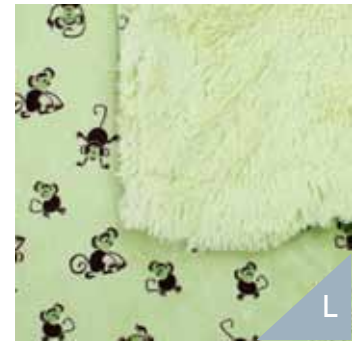
## Children's Throws

Children's throws are available in all three throw styles. Pick your favorite or create your own!

L = Lined, H = Hemmed, P = Plush



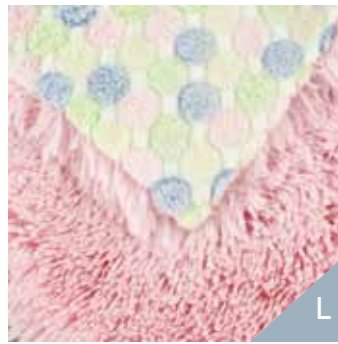
Baby candy ct26271-0022



Shaggy sage ct26441600-0032



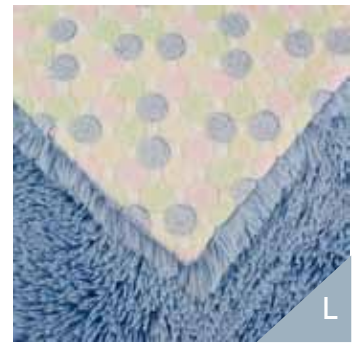
Giddy Up natural ct12605-009



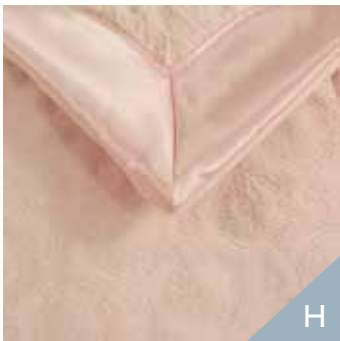
Shaggy pink ct43230-0005



Shaggy sage ct43441-0005



Shaggy blue ct43231-0005



Circles Quilt pink ct12m2052-005



Circles Quilt green ct12m2032-005



Ele village brown ctc26c597-0052



Fido ct2626m292-0002



Haverford petal ct26c074-0003



Passion Suede celery ct26896-0071



Passion Suede cloud ct26802-0081



Passion Suede rose ct26803-0081

### General Throw Codes and Dimensions

	12x26 INCHES	26x40 INCHES	53x60 INCHES
THROW	ct12xxx	ct26xxx	ct50xxx
THROW with MITERED BAND	ct12mxxx	ct26mxxx	ct50mxxx

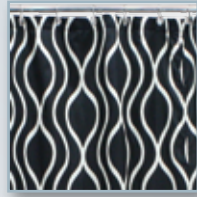
xxx = fabric number



TABLE LINENS



PET BEDS



SHOWER CURTAINS



HOLIDAY DECOR



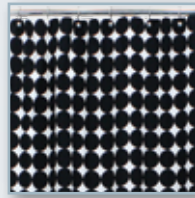
BEDDING



THROWS



OTTOMANS



CURTAIN PANELS



PILLOWS

Can't seem to find what you are looking for? **Create your own throw** using the Swatch and Product Brochure under "Catalogs" at [www.chooty.com](http://www.chooty.com).

866.729.1135



Chooty & Co.  
Simply Stunning  
American Made Products

[www.chooty.com](http://www.chooty.com)